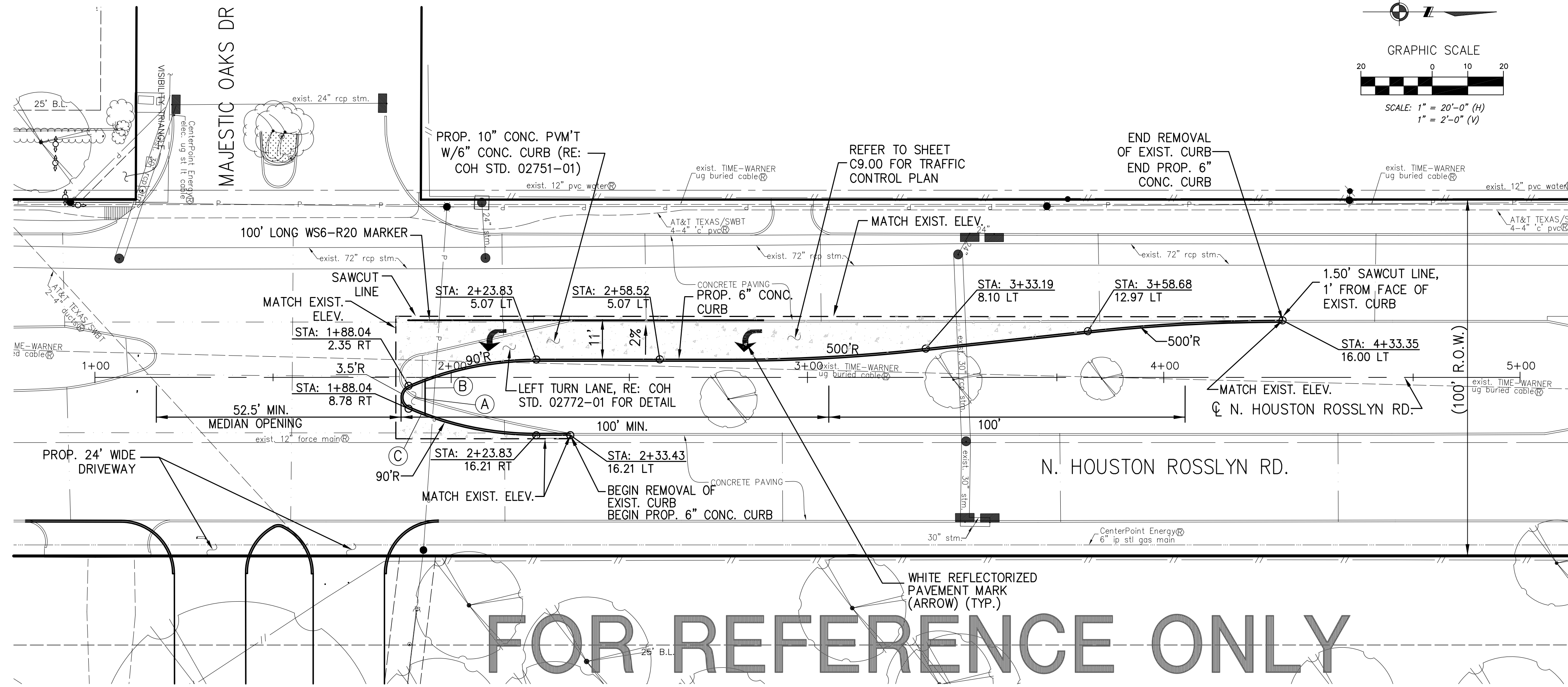


S:\Proj-2019\19078 (P17113 ALABONSON PARK)\Dwgs\Design\Bidding Set 032320\C7 Left Turn Lane.dwg



NOTES:

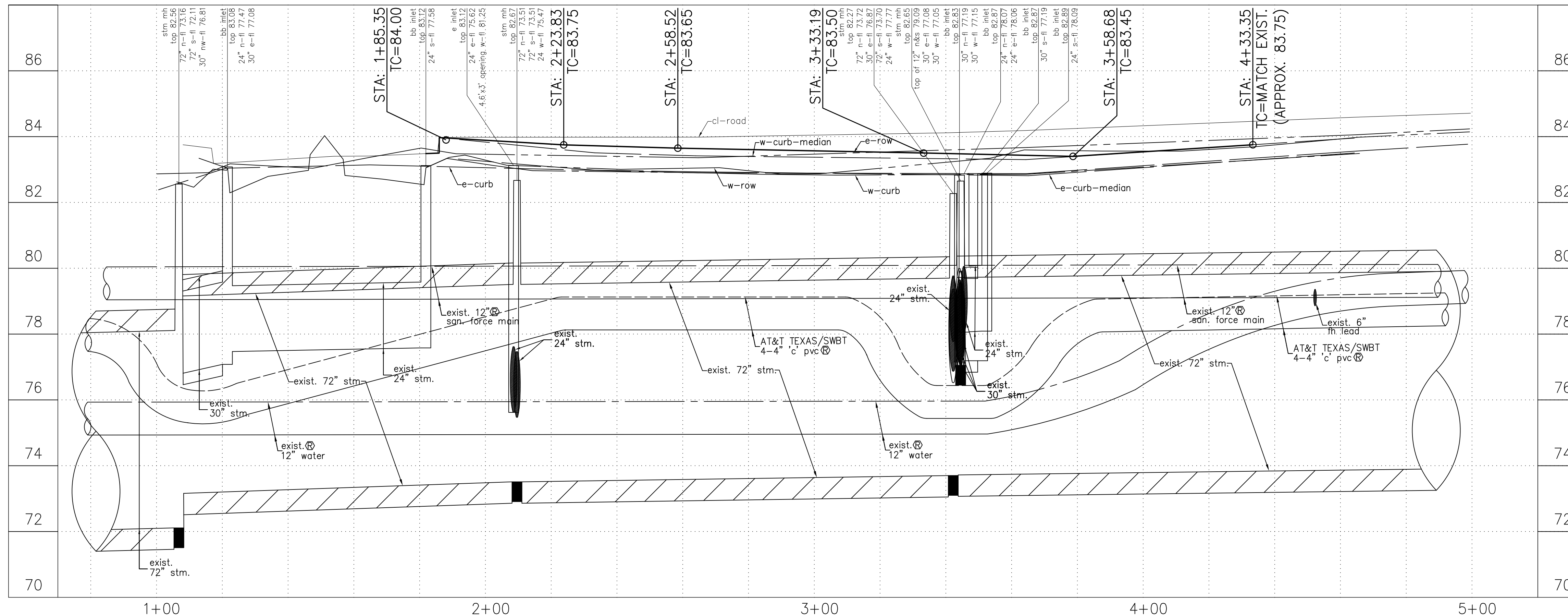
- REFER TO SHEET C7.01 FOR OTHER GRADING AND PAVING RELATED NOTES.
- CONTRACTOR TO PAINT ALL MEDIAN ENDS, YELLOW REFLECTIVE PAINT, FROM P.C. TO P.T. AND 30' BACK OF P.C./P.T., AT FINAL CONCLUSION OF PROJECT.
- REFER TO 'STANDARD DETAILS' SHEETS FOR MORE INFORMATION.
- REFER TO SHEET C9.00 FOR THE TRAFFIC CONTROL PLAN.
- ALL SIGNS AND PAVEMENT MARKINGS TO BE PER T.M.U.T.C.D. AND CITY OF HOUSTON SIGNING AND PAVEMENT MARKING STANDARD DETAIL SHEETS.

LEGEND:

- SAWCUT EXIST. PVM'T
- == PROP. CURB
- ▣ PROP. CONC. PVM'T
- TC TOP OF CURB
- TP TOP OF PAVEMENT

KEYED NOTES:

- (A) 6" REINFORCED CONCRETE WALK COLORED BLACK.
- (B) 1" BOARD EXPANSION OR 1/2" NON-EXTRUDING PREFORMED JOINT, SEE COH STANDARD DETAIL 02772-01.
- (C) YELLOW REFLECTORIZED PAINT FROM CURB TO GUTTER AROUND ESPLANADE NOSE. SEE COH STANDARD DETAIL 02772-01.



PROJECT TITLE:	ALABONSON PARK - SPORT AND NATURE COMPLEX
SHEET DESCRIPTION:	LEFT TURN LANE LAYOUT
DRAWN BY:	JZ
CK'D BY:	KM
DATE:	03/24/2020
JOB NO.:	
SCALE:	H: 1"=20', V: 1"=2'

HARRIS COUNTY
ENGINEERING
DEPARTMENT

TALLEY LANDSCAPE ARCHITECTS, INC.
LANDSCAPE ARCHITECTS

KUO & ASSOCIATES, INC.
REGISTERED PROFESSIONAL ENGINEERS

KUTUBUL A. M. MANUODD
93532
LICENSED PROFESSIONAL ENGINEER

03/24/2020

SHEET NO:
C7.05
32 / 76